



*Place for new Waldorf school in Prague*





*Placement of corner stones around the plot,  
creation of the spiritual connection with the soul of the place, May 2009*

*Creation of the model of new Waldorf school in Prague*

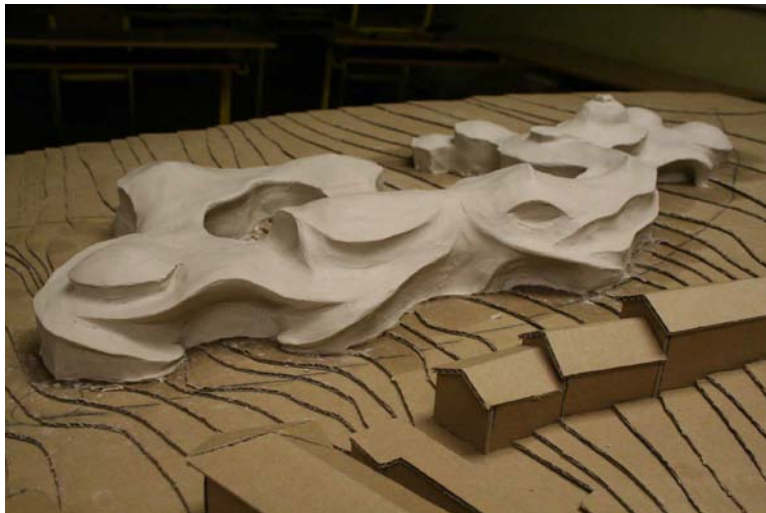


*Collective work with investors, organic architecture coming from sacred  
geometry and from suitable forms influenced by children's age. , language  
of living nature forms, inspiration by live music during creation, creative work  
and social agreement influenced by inspiration, imagination and intuition*



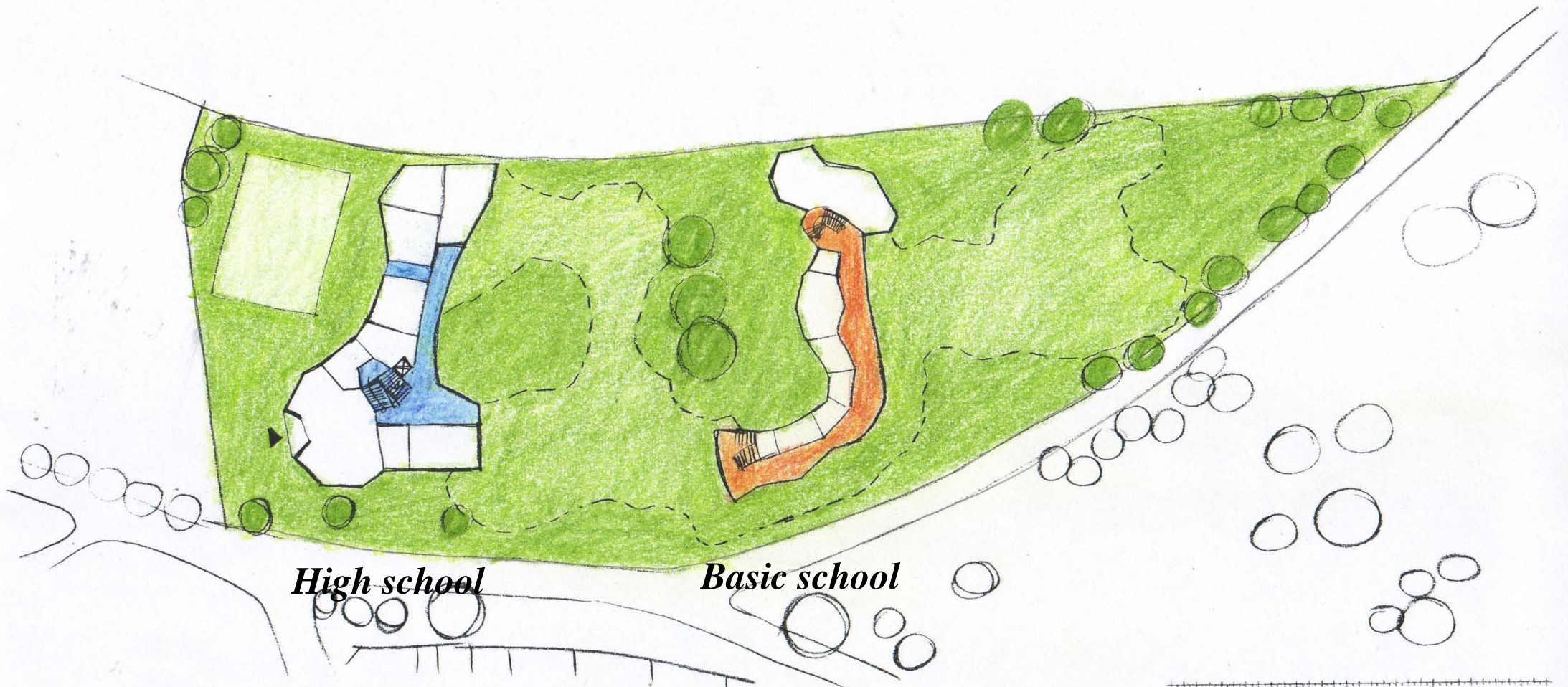
*Organic forms coming from relations with human being,  
way of work which create connections with elemental kingdom and with vital etheric forces*

*Creation of the model of new Waldorf school in Prague*



*Collective work with investors, organic architecture coming from sacred  
geometry and from suitable forms influenced by children's age., language  
of living nature forms, inspiration by live music during creation, creative work  
and social agreement influenced by inspiration, imagination and intuition*





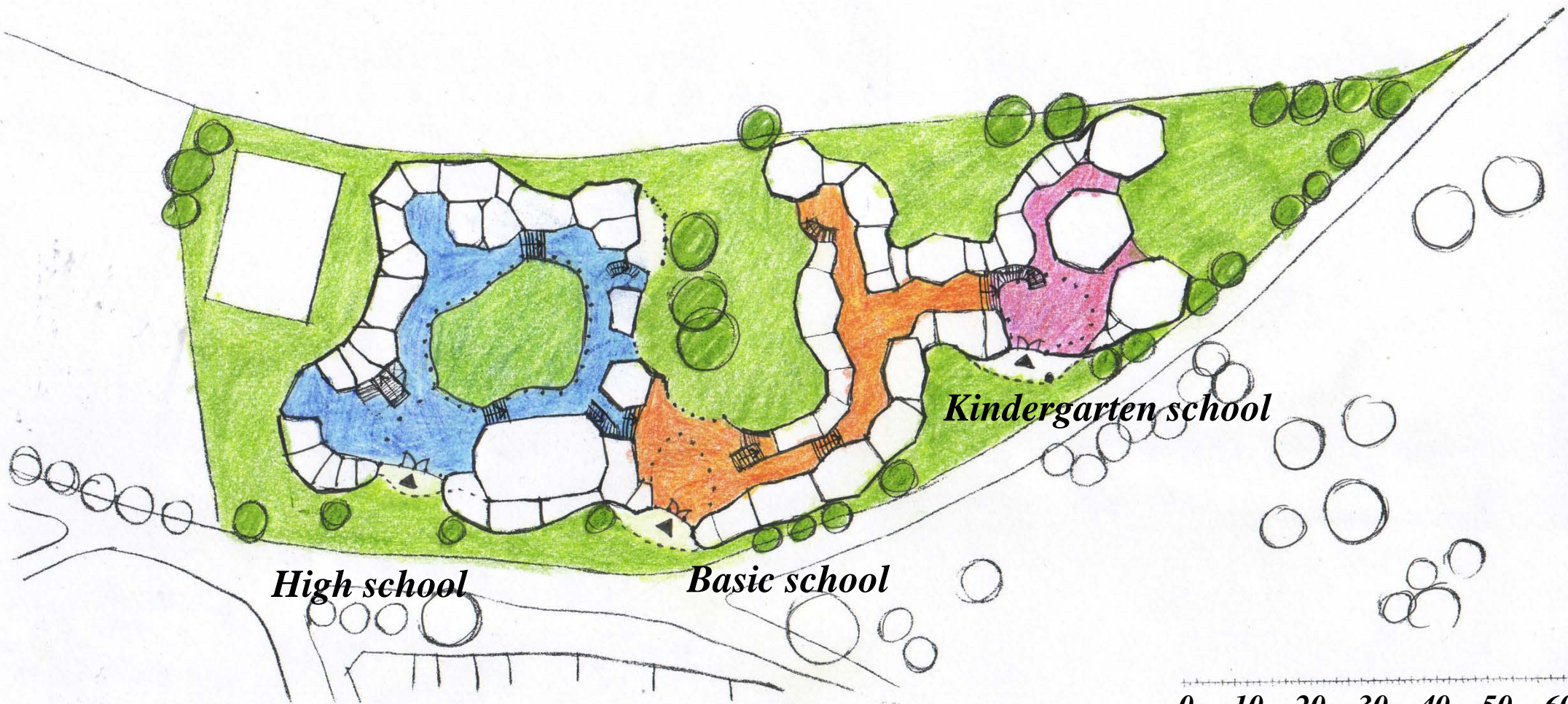
*High school*

*Basic school*

0 10 20 30 40 50 60m

*Underground floor*





*High school*

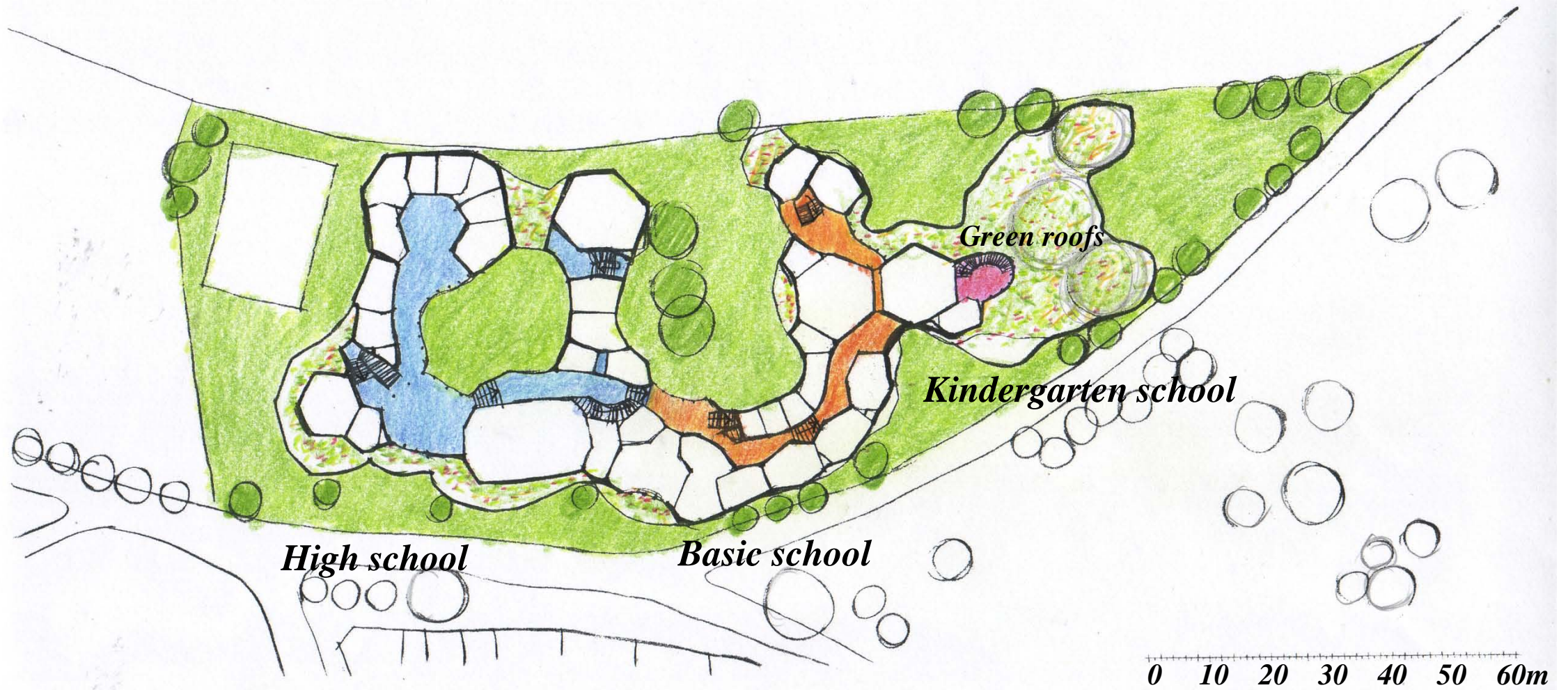
*Basic school*

*Kindergarten school*

0 10 20 30 40 50 60m

*Ground floor*





*First floor*





*Study project, model of new Waldorf school in Prague in the scale 1:200,  
arch. Oldrich Hozman, [www.arc.cz](http://www.arc.cz)*