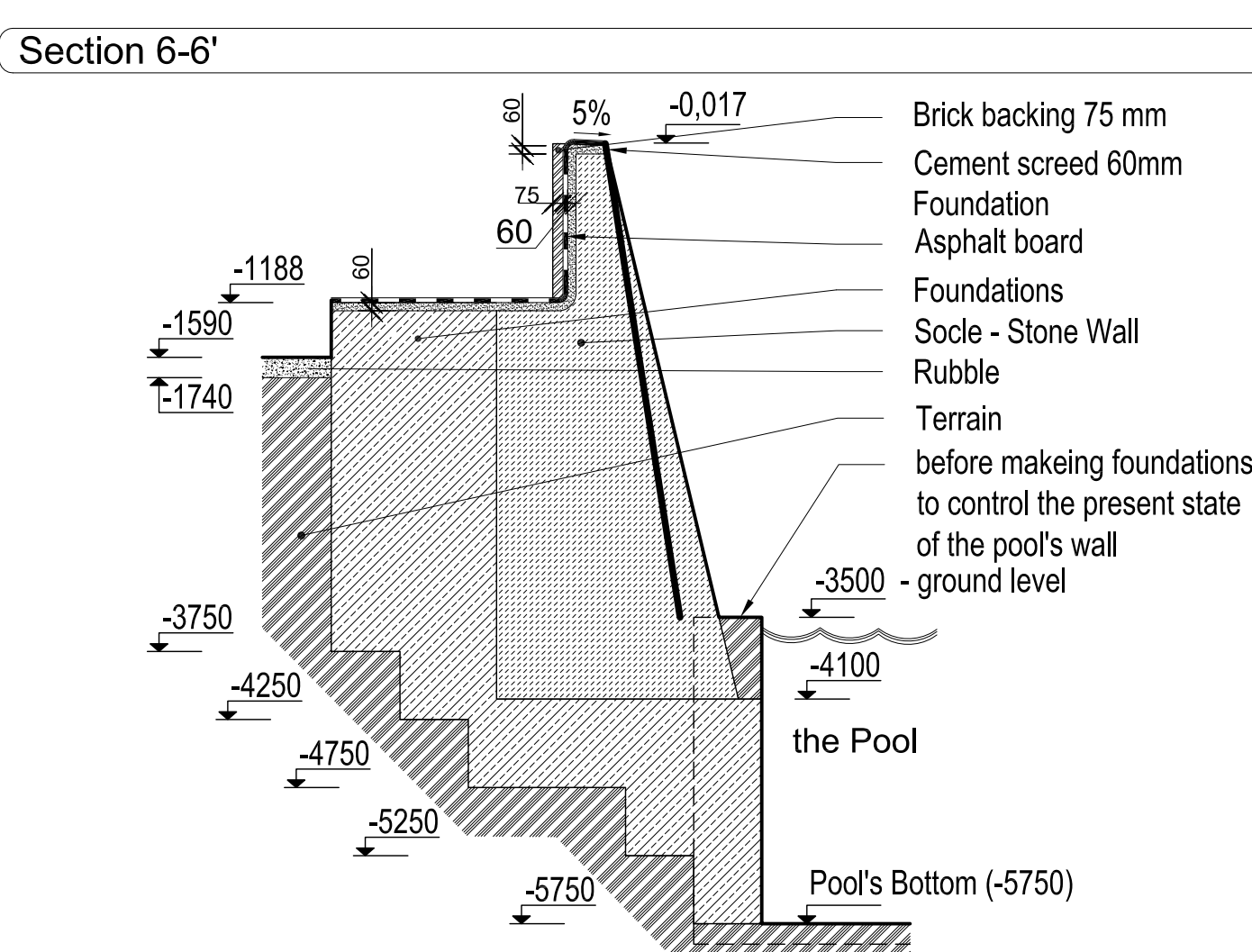
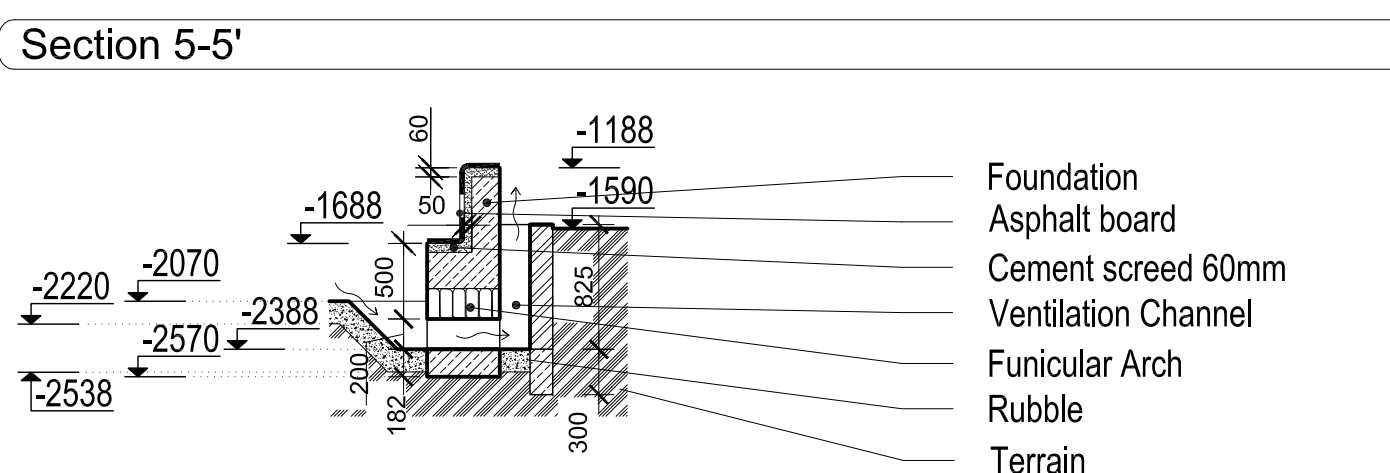
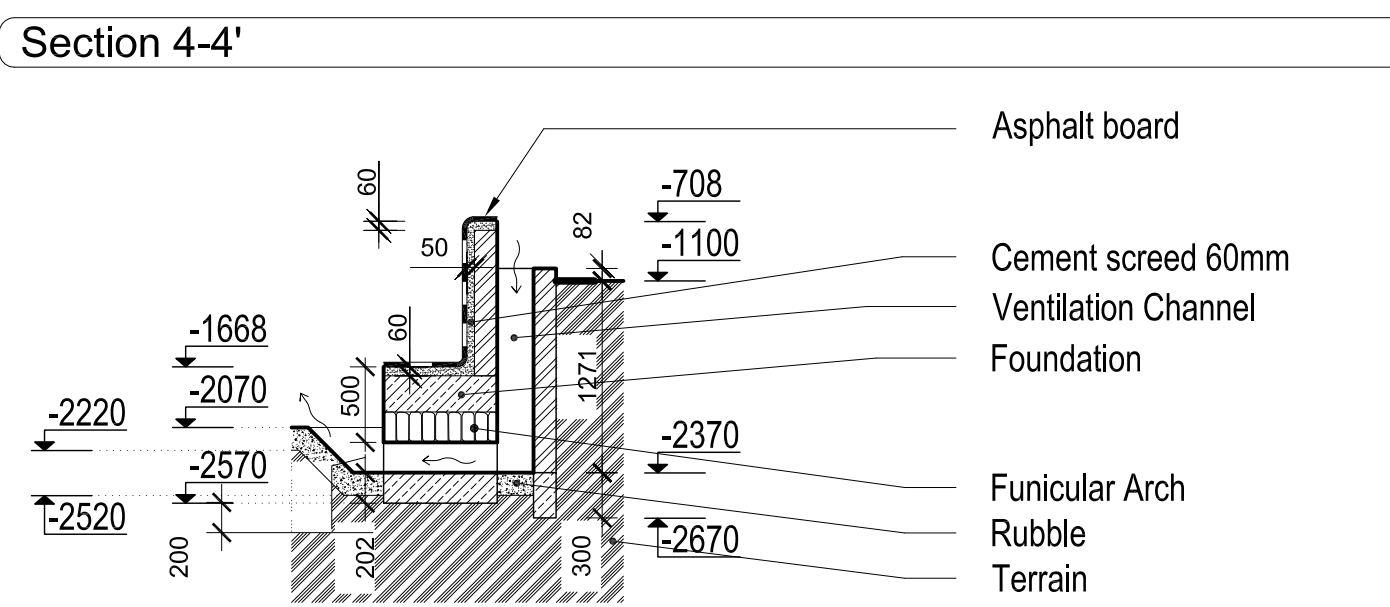
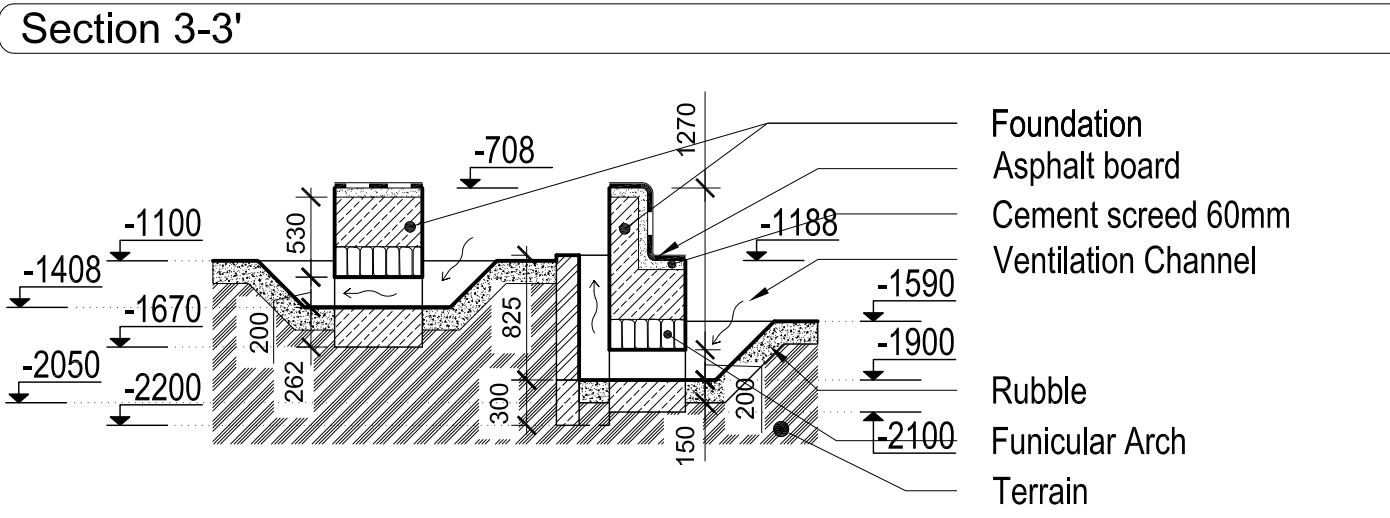
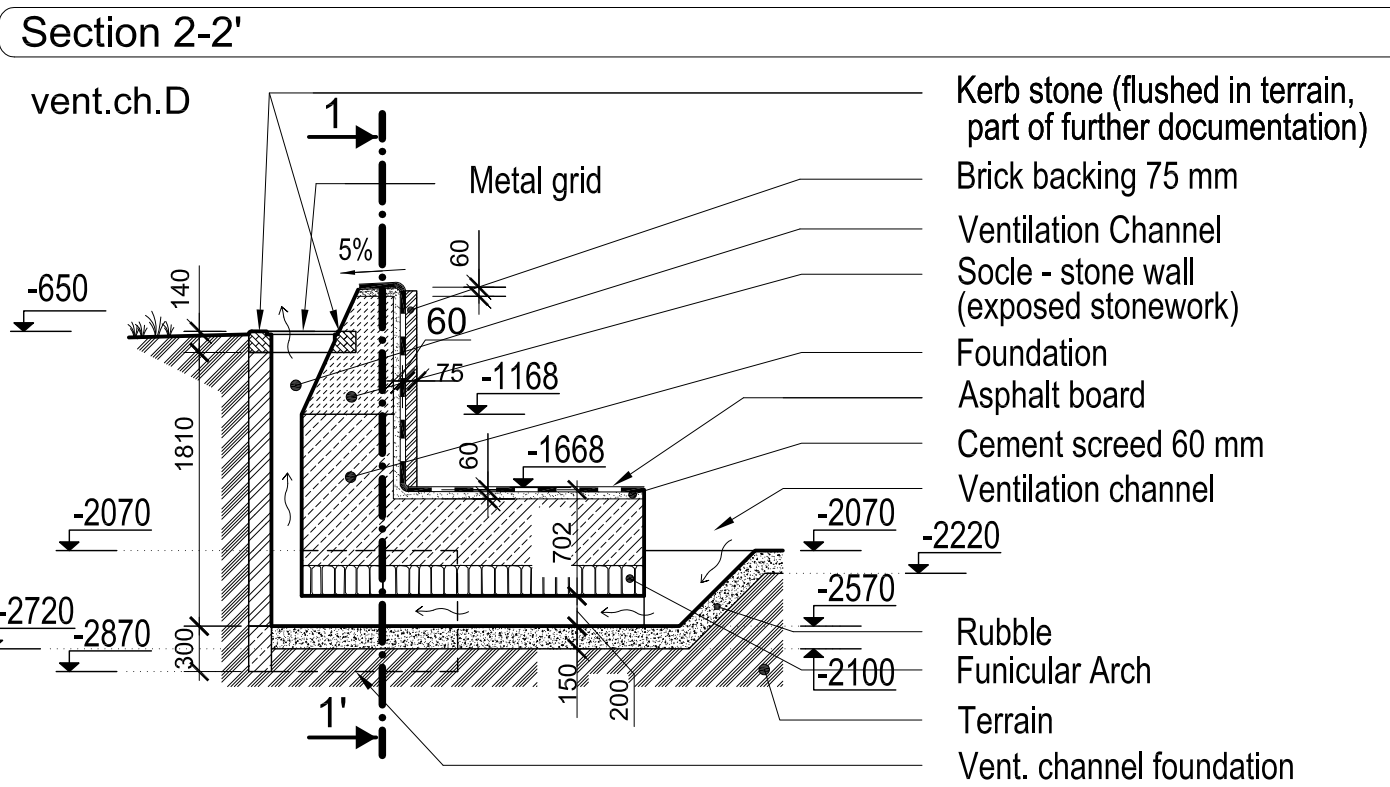
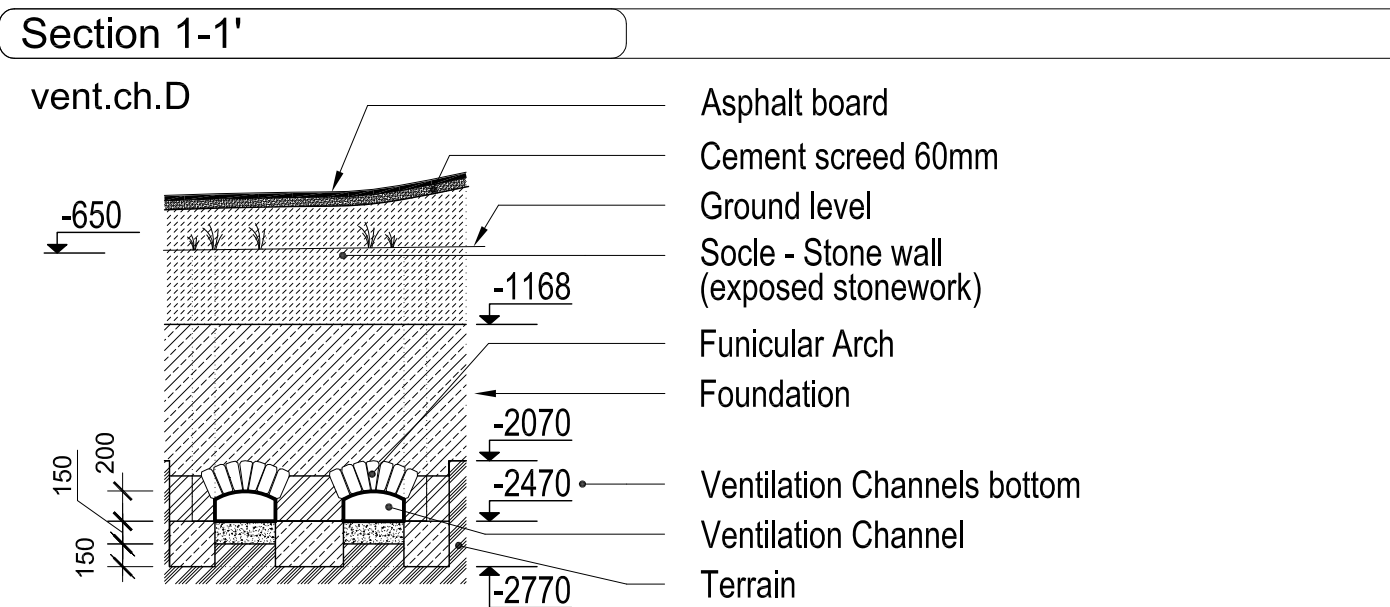
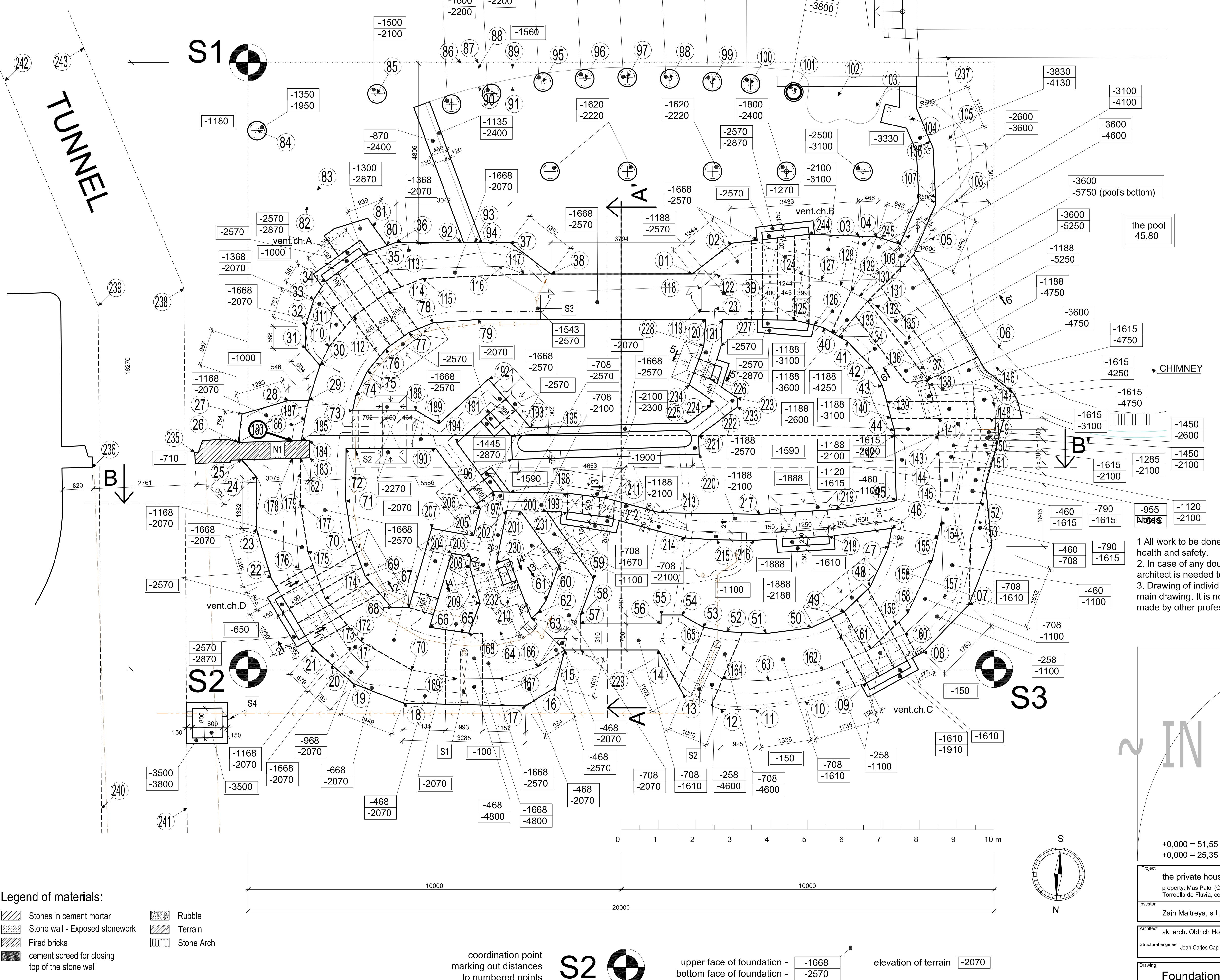


VENTILATION CHANNELS - SECTIONS



- all ventilation channels have ceiling height 200 mm and they are vaulted with funicular arches through the foundations
- asphalt based waterproof protection boards will be installed at cement screed flatwork with thickness at about 50 mm, vertical part of asphalt boards at socle's stonework will be protected with brick backing from fired bricks
- space between foundations gravel in height 150mm (see sections of ventilations channels)



distances to mark out points of foundations [mm]

#	to S1	to S2	to S3	#	to S1	to S2	to S3	#	to S1	to S2	to S3
1	13 102	15 943	13 302	83	4 164	12 619	22 213	165	19 989	11 646	8 381
2	13 944	17 292	13 415	84	3 899	12 972	22 229	166	12 972	11 792	12 233
3	17 021	20 227	12 345	85	1 904	14 389	24 409	167	17 845	6 737	13 270
4	17 539	20 691	12 485	86	1 641	15 793	22 565	168	16 413	6 395	14 116
5	18 891	21 636	11 678	87	5 718	17 230	21 636	169	17 445	5 160	14 388
6	21 499	21 884	8 669	88	6 168	17 384	21 342	170	16 878	4 388	15 812
7	24 192	24 629	1 846	89	1 866	17 538	21 227	171	16 808	3 266	16 989
8	24 034	18 100	1 568	90	7 083	17 603	20 664	172	15 829	3 122	16 982
9	22 495	18 403	3 442	91	8 203	16 799	20 980	173	16 022	2 764	17 285
10	22 771	14 944	1 108	92	7 112	17 146	20 206	174	14 548	2 792	18 054
11	22 046	15 698	6 486	93	4 481	17 208	18 303	175	13 208	1 540	18 871
12	21 486	12 716	7 410	94	7 752	12 996	18 031	176	13 632	3 026	18 840
13	20 570	11 682	8 364	95	7 830	13 033	17 954	177	11 946	4 027	19 107
14	19 217	11 027	9 200	96	7 896	17 881	19 999	178	11 089	5 384	19 810
15	17 802	8 506	11 521	97	9 038	18 228	19 296	179	11 112	5 431	19 325
16	19 273	11 182	11 860	98	10 179	18 576	18 597	180	11 081	6 017	20 088
17	18 876	8 263	11 772	99	11 321	19 418	18 017	181	10 649	5 649	20 345
18	18 800	7 516	12 589	100	12 464	20 083	17 448	182	10 704	5 928	19 443
19	17 886	6 866	13 661	101	13 607	20 748	16 983	183	10 732	6 802	19 817
20	16 806	2 844	17 187	102	14 750	21 409	16 384	184	10 271	6 385	19 317
21	16 316	2 448	17 766	103	15 893	22 064	15 825	185	10 240	6 296	18 944
22	15 806	1 818	18 278	104	16 875	22 804	15 414	186	10 176	6 105	20 632
23	13 855	2 207	19 831	105	17 857	23 544	14 901	187	9 716	5 841	21 673
24	12 503	3 775	20 137	106	18 899	23 555	14 261	188	10 351	5 262	19 999
25	11 025	5 252	20 405	107	19 410	23 131	14 265	189	10 959	5 333	16 273
26	9 859	6 819	20 308	108	19 318	22 704	12 562	190	11 417	4 987	15 154
27	9 432	6 835	21 207	109	19 346	21 237	11 866	191	12 064	4 599	15 626
28	9 133	7 281	20 245	110	19 303	20 149	11 819	192	12 374	3 965	14 019
29	9 212	7 363	19 737	111	19 941	19 027	20 149	193	11 636	3 253	15 631
30	8 514	6 365	19 818	112	20 783	18 904	19 686	194	11 502	2 821	14 962
31	7 826	6 732	20 389	113	6 724	11 227	19 500	195	12 787	9 040	14 990
32	7 250	6 311	20 624	114	7 296	10 784	19 163	196	12 787	9 040	14 990
33	6 589	10 005	20 759	115	7 449	11 476	19 558	197	12 787	9 040	14 990
34	6 020	10 200	20 759	116	7 449	11 476	19 558	198	13 501	8 484	13 808
35	5 999	11 550	20 243	117	8 789	12 799	17 033	199	12 787	9 040	14 990
36	5 999	11 550	20 243	118	9 186	12 621	16 598	200	14 460	9 049	12 721
37	6 249	12 117	19 694	119	13 590	15 888	12 885	201	14 076	8 444	13 384
38	6 514	12 426	19 818	120	13 811	15 804	12 885	202	13 982	8 421	13 727
39	6 909	13 355	19 516	121	14 069	15 448	12 159	203	14 533	6 876	14 363
40	6 239	14 434	19 759	122	14 467	15 984	11 651	204	14 256	6 279	14 887
41	6 979	17 933	10 242	123	15 791	16 437	12 840	205	14 063	7 021	14 406
42	7 723	18 313	9 628	124	14 150	15 886	12 222	206	13 487	7 370	14 431
43	6 943	18 474	6 905	125	12 785	17 164	10 408	207	13 826	6 201	13 927
44	19 000	18 657	8 167	126	16 592	17 665	10 508	208	14 794	6 543	14 313
45	18 943	18 474	6 905	127	16 785	17 164	10 408	209	15 764	6 462	13 985
46	20 985	17 954	5 215	128	16 434	18 571	11 418	210	15 996	7 218	13 163
47	21 307	17 666	4 485	129	16 938	18 076	10 816	211	16 022	6 821	11 438
48	21 537	17 466	4 308	130	17 291	19 075	10 031	212	15 479	5 362	11 225
49	21 818	16 830	3 985	131	17 544	19 107	10 035	213	16 309	5 119	8 804
50	21 743	16 466	4 203	132	17 803	19 326	10 438	214	17 940	5 032	8 204
51	21 399	15 137	5 005	133	18 059	19 444	10 258	215	17 940	5 032	8 204
52	20 684	13 932	6 119	134	17 235	18 861	10 029	216	18 663	4 395	7 203
53	19 943	12 866	7 242	135	17 462	17 637	9 841	217	18 317	4 451	6 715
54	19 445	12 246	7 886	136	18 223	19 791	9 106	218	20 103	3 972	6 076
55	19 945	11 721	8 463	137	19 912	19 848	8 389	219	19 808	3 296	5 053
56	18 800	11 166	9 045	138	20 114	19 801	7 662	220	16 017	3 297	4 787
57	18 890	11 132	9 010	139	20 817	19 800	6 989	221	15 065	3 811	4 098
58	17 499	8 952	11 156	140	19 387	18 564	7 731	222	15 347	3 433	3 488
59	17 293	8 028	11 309	141	18 817	18 683	6 889	223	15 907	3 484	3 011
60	16 671	9 502	10 996	142	20 000	18 434	6 818	224	15 347	3 433	3 488
61	15 989	8 784	11 987	143	21 042	19 501	6 448	225	15 203	3 517	3 029
62	14 495	6 197	12 562	144	21 276	19 830	5 906	226	15 032	3 434	3 011
63	16 683	7 913	12 324	145	22 041	19 118	4 655	227	14 785	3 359	11 345
64	16 733	7 716	12 479	146	21 640	21 603	4 113	228	14 284	3 494	11 645
65	16 684	6 829	13 286	147	21 778	21 383	3 625	229	18 105	8 925	11 102
66	16 342	5 797	14 315	148	21 914	21 180	3 175	230	15 005	7 229	11 640
67	15 915	4 991	15 178	149	22 000	20 984	2 726	231	14 785	6 562	11 191
68	15 249	4 514	15 774	150	22 213	20 806	2 277	232	15 638	7 588	13 019
69	15 126	4 188	16 231	151	22 374	20 627	1 828	233	16 045	8 884	13 838
70	14 133	4 004	17 047	152	22 906	20 139	4 400	234	14 653	14 074	11 174
71	13 105	4 408	17 567	153	23 120	19 919	3 947	235	15 558	15 963	22 203
72	12 054	5 210	17 956	154	22 253	19 938	4 233	236	11 641	8 929	24 773
73	10 981	6 472	18 355	155	22 396	19 798	3 967	237	11 717	21 006	16 482
74	9 741	7 498	18 842	156	22 609	19 677	3 595	238	12 304	19 350	24 909
75	9 393	7 862	18 615	157	23 538	19 741	3 335	239	7 666	10 536	25 919
76	8 881	8 098	18 655	158	24 027	17 754	2 703	240	20 399	5 420	24 223
77	8 526	9 348	18 408	159	25 006	17 416	2 883	241	20 068	4 072	21 951
78	8 429	10 002	18 101	160	23 340	17 623	2 678	242	6 547	17 989	30 862
79	8 569	10 556	17 674	161	22 944	16 708	3 346	243	4 421	17 277	29 846
80	9 244	11 224	16 716	162	22 445	15 830	4 570	244	14 732	18 031	12 870
81	6 167	11 963	19 844	163	21 682	13 980	6 062	245	18 271	21 163	11 894
82	5 534	12 337	20 443	164	20 870	12 724	7 385	246	18 271	21 163	11 894

- Notes: Channels for sewerage system
- S1 Channel for sewerage pipe (outdoor exit of pipe in -4700 mm)
 - S2 Channel for sewerage pipe (outdoor exit of pipe in -4460 mm)
 - S3 Slot for sewerage pipe
 - S4 Inspection sewer manhole
 - N1 Old wall will be underpin, look in structural documentation

- All work to be done according to current regulations and technology rules, including health and safety.
- In case of any doubt, uncertainty or unforeseen circumstances consultation with the architect is needed to clarify progress of work.
- Drawing of individual professions and other documentation on the list are part of the main drawing. It is necessary to coordinate building structure drawings and adjustments made by other professions.

IN PROGRESS

+0,000 = 51.55 meters of the survey
+0,000 = 25.35 meters above the sea

Project: the private house in El Palol property: Mas Palol (Can Fages), municipal area: Torreella de Fluvià, county: l'Alt Empordà, Spain		 <small>ak arch. Oldrich Hozman No Zapsada 01, 101 00 Praha 10 Czech Republic Czech Chamber of Architects Reg. no. 01284 tel +420 225 31 14 22 www.arc-studio.cz</small>	
Investor: Zain Maitreya, s.l., Margenat 23, 08017 Barcelona, Spain	Architect: ak. arch. Oldrich Hozman	Drawn by: Bc. Jan Soukup	Professional: xxxx
Structural engineer: Joan Carles Capilla Ten and Maria Pia Monaco Baques, arquitectes	Controlled by: arch. Arturo de la Maza	Scale: 1:50	State of the project: EXECUTIVE PROJECT
Drawing: Foundations PLAN		Date: 11 / 2009	Drawing number: 03

- Legend of materials:
- Stones in cement mortar
 - Stone wall - Ex